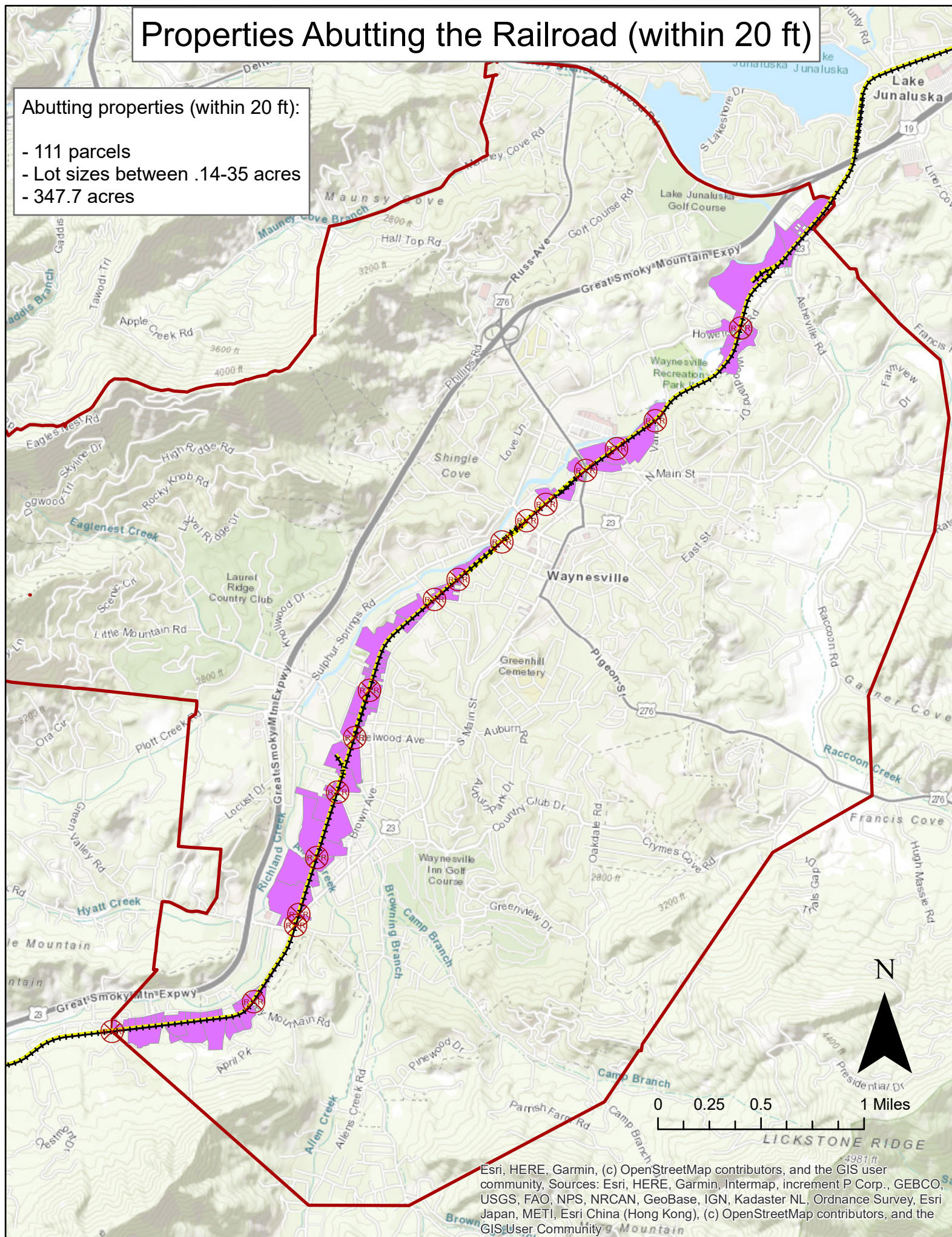


Properties Abutting the Railroad (within 20 ft)

Abutting properties (within 20 ft):

- 111 parcels
- Lot sizes between .14-35 acres
- 347.7 acres

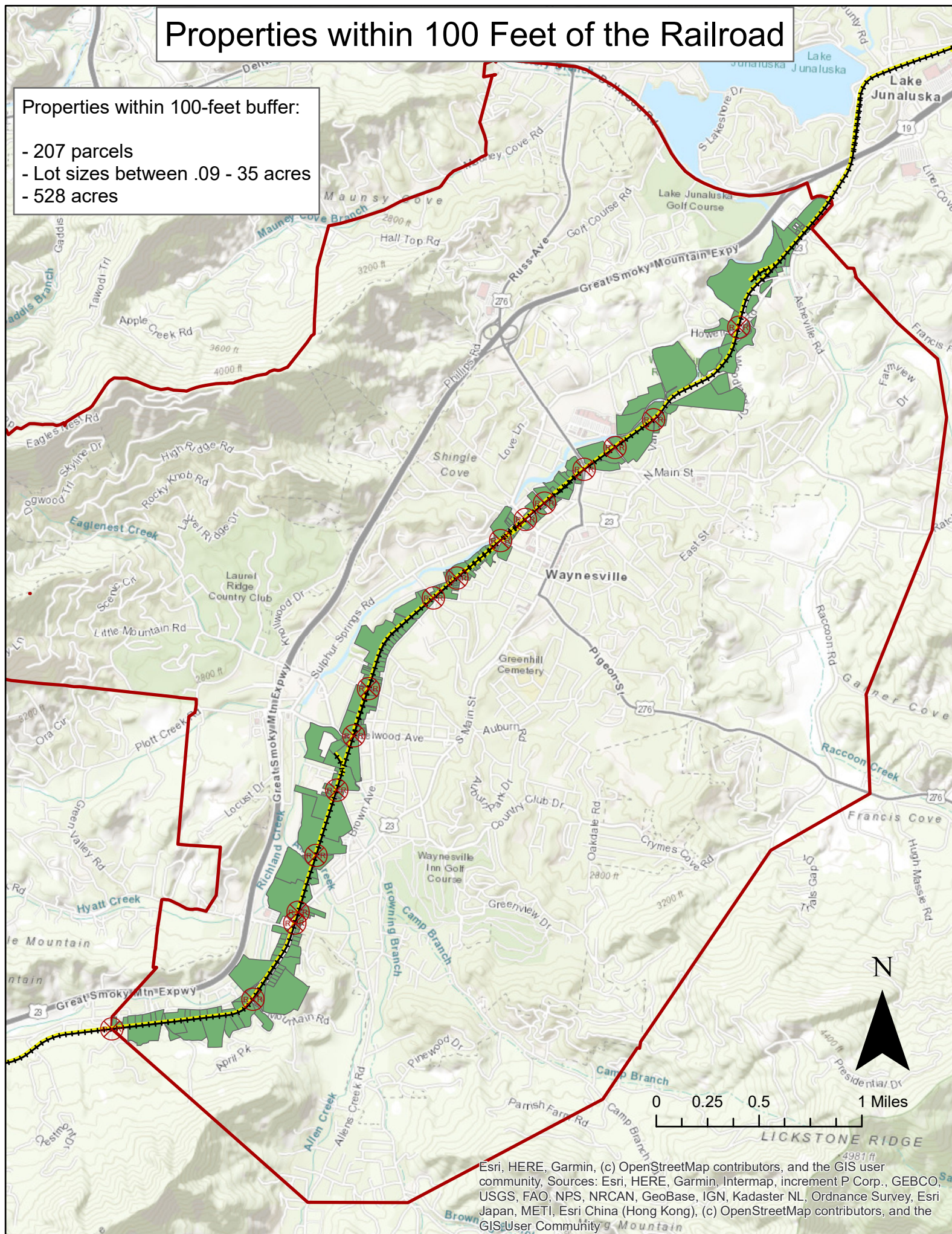


Esri, HERE, Garmin, (c) OpenStreetMap contributors, and the GIS user community. Sources: Esri, HERE, Garmin, Intermap, increment P Corp., GEBCO, USGS, FAO, NPS, NRCAN, GeoBase, IGN, Kadaster NL, Ordnance Survey, Esri Japan, METI, Esri China (Hong Kong), (c) OpenStreetMap contributors, and the GIS User Community

Properties within 100 Feet of the Railroad

Properties within 100-foot buffer:

- 207 parcels
- Lot sizes between .09 - 35 acres
- 528 acres

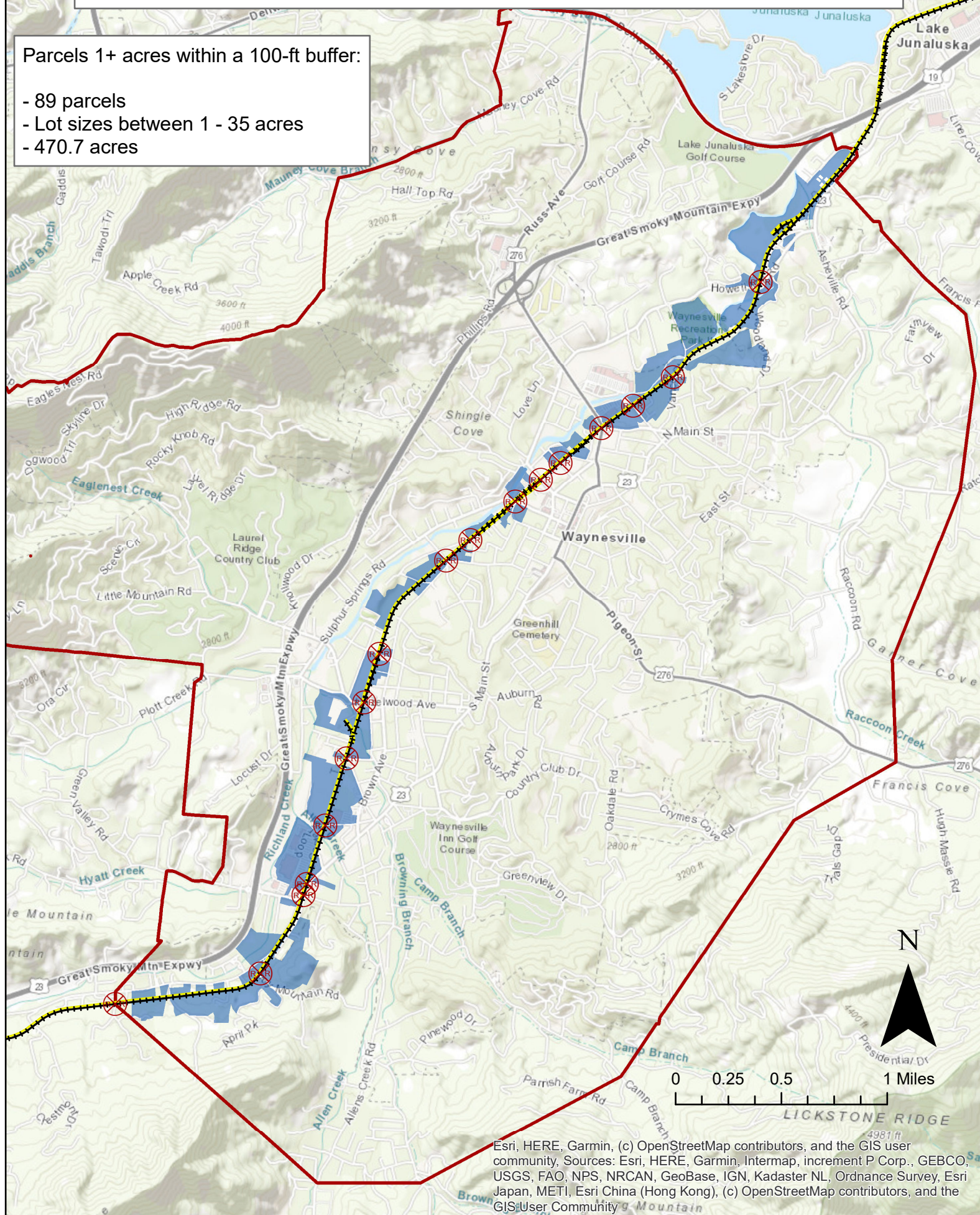


Esri, HERE, Garmin, (c) OpenStreetMap contributors, and the GIS user community. Sources: Esri, HERE, Garmin, Intermap, increment P Corp., GEBCO, USGS, FAO, NPS, NRCAN, GeoBase, IGN, Kadaster NL, Ordnance Survey, Esri Japan, METI, Esri China (Hong Kong), (c) OpenStreetMap contributors, and the GIS User Community

Properties of 1+ Acres within 100 feet of the Railroad

Parcels 1+ acres within a 100-ft buffer:

- 89 parcels
- Lot sizes between 1 - 35 acres
- 470.7 acres



Esri, HERE, Garmin, (c) OpenStreetMap contributors, and the GIS user community. Sources: Esri, HERE, Garmin, Intermap, increment P Corp., GEBCO, USGS, FAO, NPS, NRCAN, GeoBase, IGN, Kadaster NL, Ordnance Survey, Esri Japan, METI, Esri China (Hong Kong), (c) OpenStreetMap contributors, and the GIS User Community