

STORMWATER

- Waynesville NPDES Permit
- Proper Waste Disposal
- General Stormwater Issues

Presented by:

Olga Grooman, Development Services
Christine O'Brien, Haywood Waterways
Caitlin Worsham, Haywood Waterways



Image by the EPA

How did the Stormwater Permit Start?

The Clean Water Act (CWA) established the basic rules for regulating discharges of pollutants into the waters of the United States and regulating quality standards for surface waters (1972).

- To restore and maintain the biological integrity of the nation's waters
- Under the CWA, the EPA has implemented pollution control programs. The CWA made it unlawful to discharge any pollutant from a point source into navigable waters, unless a permit was obtained.
- EPA's National Pollutant Discharge Elimination System (NPDES) permit program controls discharges.



Souyrce

Waynesville NPDES Permit

- Current Permit issued on August 19, 2021.
- Valid for 5 years.
- Contains 22 pages.

Goals:

- Allow the Town to discharge stormwater from their municipal separate storm sewer system.
- Protect water quality.
- Reduce the discharge of pollutants in stormwater runoff to the maximum extent practicable.



NPDES Permit

Permittees

There are currently 122 permitted MS4 entities in North Carolina. Some MS4s elect to cooperatively implement their stormwater management programs and are issued a single permit naming them as co-permittees. There are currently 109 active NPDES MS4 permits:

Include:

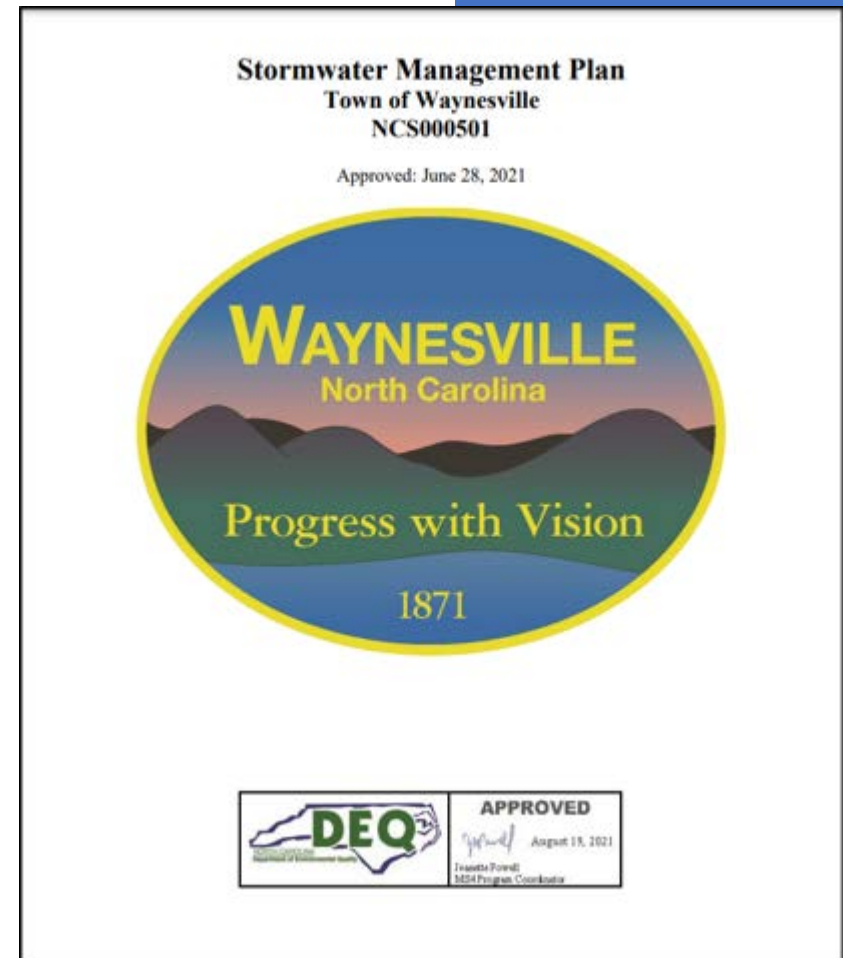
- NCDOT
- Asheville
- Clyde
- Canton
- Black Mountain
- Montreat
- Hendersonville
- Fletcher
- Laurel Park
- Weaverville
- Woodfin
- Charlotte
- Shelby
- Concord
- Gastonia
- Cary
- Chapel Hill
- Hickory



NPDES Permit Requirements

MS4 Must have a Stormwater Management Plan (SWMP) to address six Minimum Control Measures:

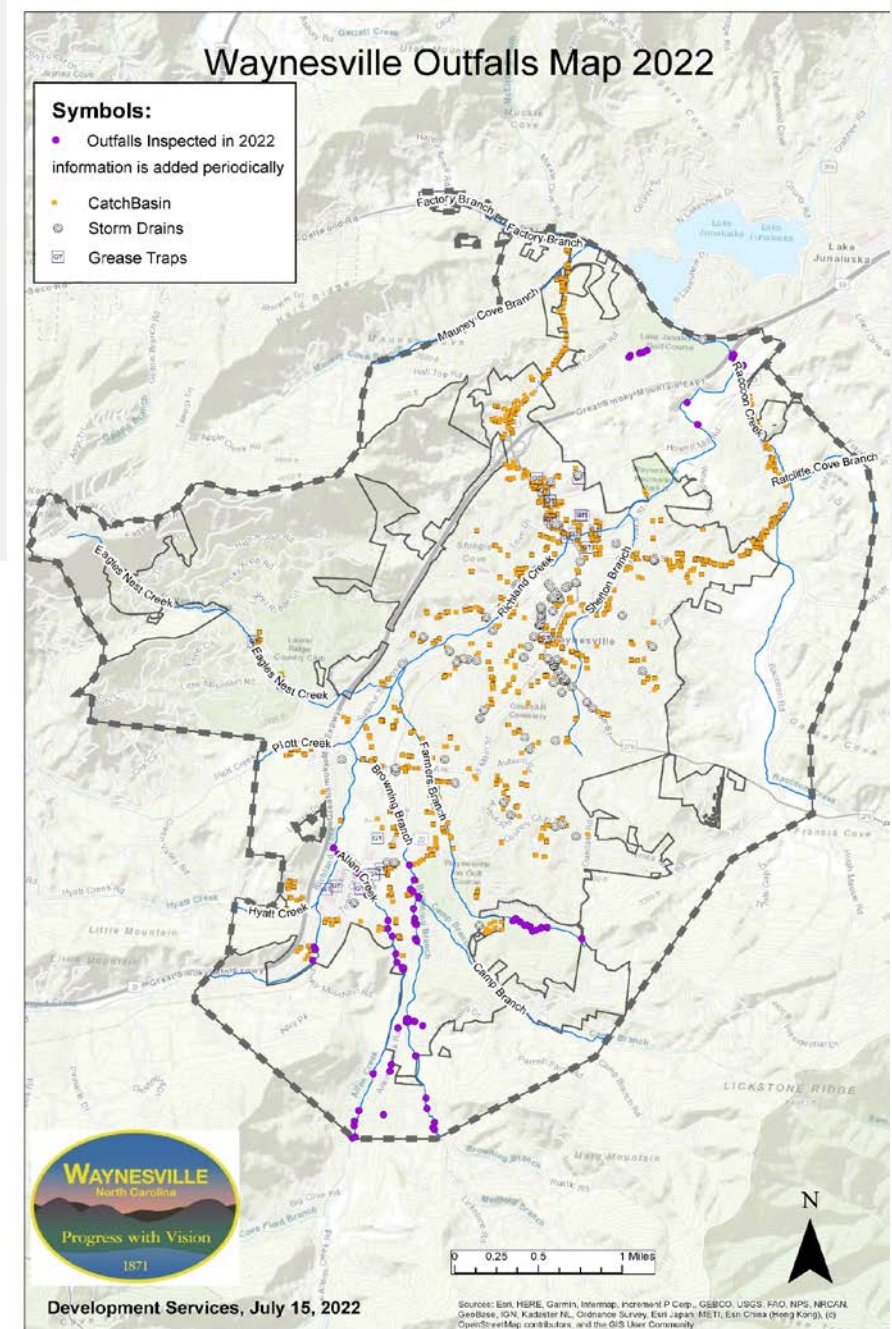
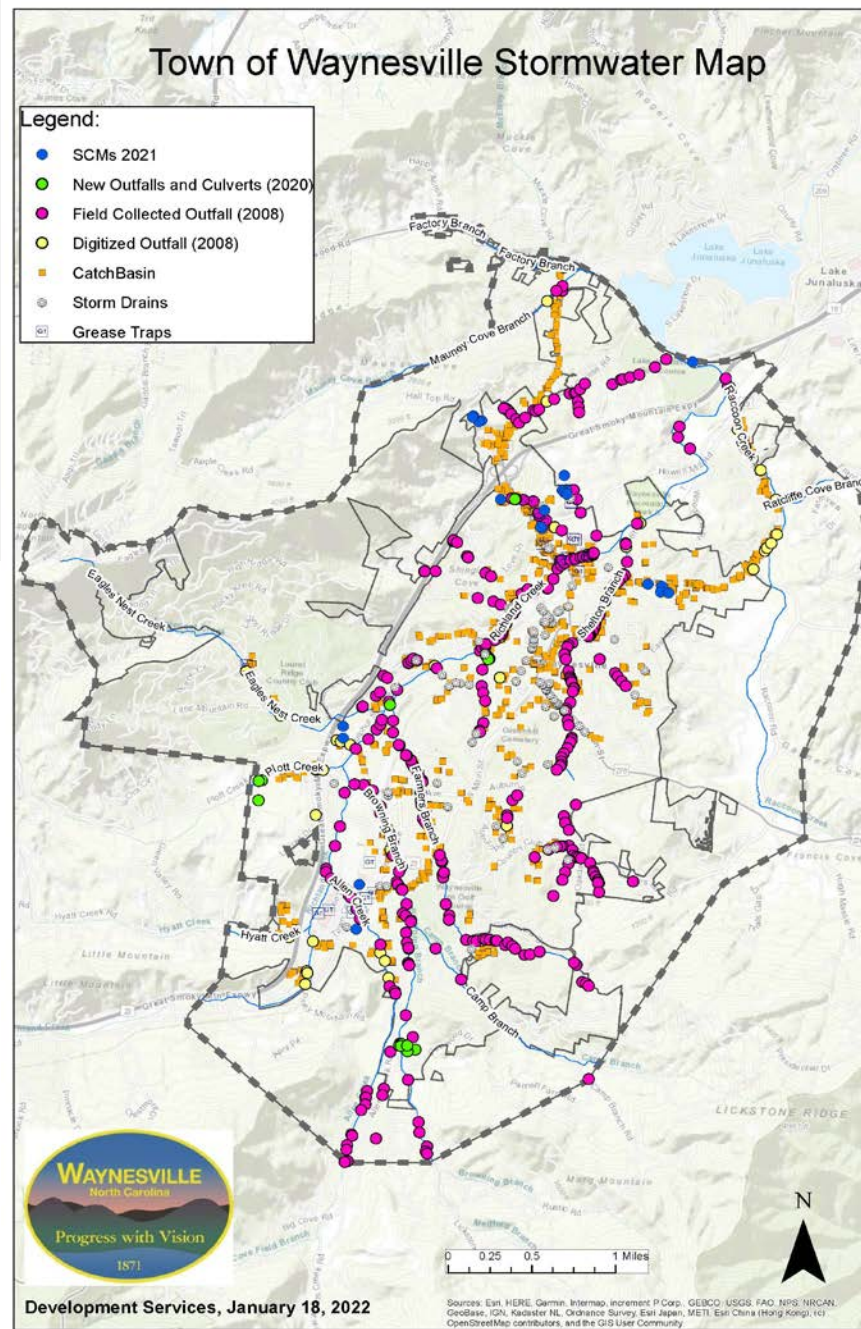
1. Public Education and Outreach
 2. Public Participation and Involvement
 3. Illicit Discharge Detection and Elimination (IDDE)
 4. Construction Site Runoff Controls
 5. Post-Construction Runoff Control Program
 6. Pollution Prevention/ Good Housekeeping
- + Program Administration (logging, annual self assessments to the NCDEQ)





Stormwater Maps

- Regular dry weather (no rain for 72 hours) outfall inspections).
- Annual inspections of Stormwater Control Measures (SCMs).





Outfalls and SCMs



Waynesville Outfalls:

- At least 20% of all major outfalls must be inspected annually (100% over the 5-year permit term).
- Approximately 454 outfalls (major and minor).
- Inspected 116 as of today (1 year, 3 months into the permit term).

SCMs:

- 30 qualifying SCMs (including 5 Town-owned)
- Bioretention cells, dry ponds, permeable pavement, aqua swirls, underground detention.
- Must be inspected annually.

Illicit Discharge Detection and Elimination Plan

Officially approved by the NC DEQ on June 17, 2022.

Town of Waynesville

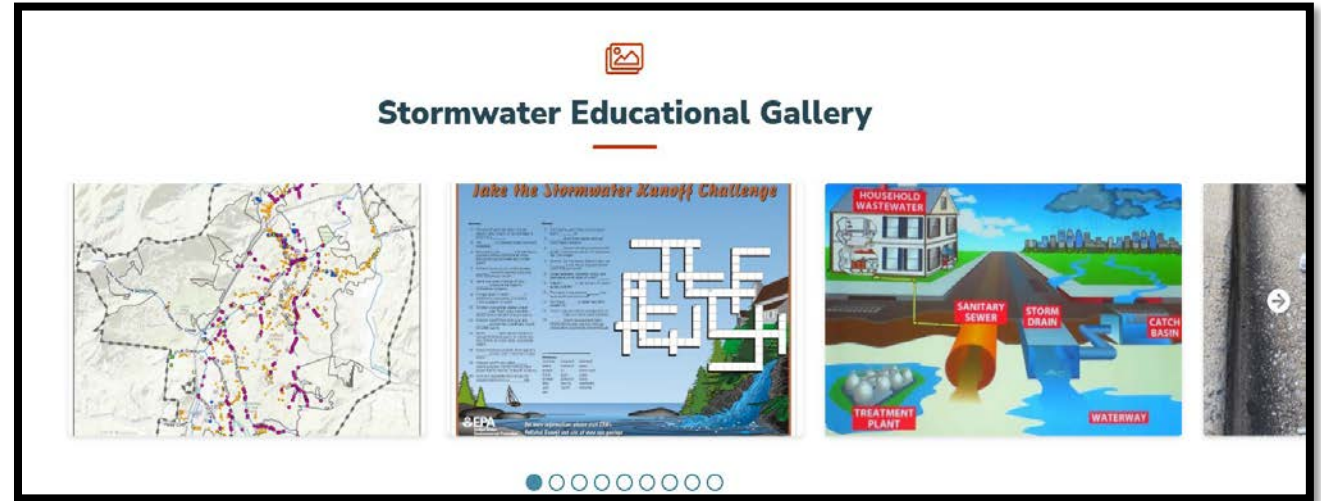
Illicit Discharge Detection and Elimination Plan



Table of Contents

Revisions to the Plan	3
Purpose and Intent	4
Part I: Illicit Discharge Overview	
1.1 Illicit Discharges and Connections	5
1.2 Important Terminology	7
1.3 Generating Sites	10
Part II: Waynesville Illicit Discharge Program	
2.1 Overview and Challenges	11
2.2 Implementation of Illicit Discharge Requirements in Waynesville Stormwater Permit	12
Appendix A: Waynesville Illicit Discharge Ordinance	22
Appendix B: Waynesville Ordinance on Penalties for Violation and Enforcement Mechanisms	24
Appendix C: Town of Waynesville Outfall Map	29
Appendix D: Waynesville Land Use Map	30
Appendix E: Town of Waynesville Stormwater Map	31

Waynesville Stormwater Page



When calling, please be prepared to share the following information: time/date, location, and

description: [Services](#) [Residents](#) [Visitors](#) [Businesses](#) [Departments](#) [Government](#)

Please check the sections in the drop-down menu below to learn about our stormwater program.

Skip To: [About the Stormwater Program](#) ✓

- Post-Construction Stormwater Management
- Pollution Prevention and Good Housekeeping Program
- Public Hearings
- Community Projects
- Educational Resources

About the Stormwater

NPDES Program

In response to the 1987 amendments to the Clean Water Act, the Environmental Protection Agency (EPA) developed Phase I of the Stormwater Program in 1990. Phase I of the program requires a NPDES permit coverage for medium and large municipal separate storm sewer systems (MS4s) serving populations of 100,000 people or more.

Stormwater questions or to report an [illicit discharge](#):

Development Services: email: ogrooman@waynesvillenc.gov
or call: (828) 356-1172

Monday to Friday, 8 am - 4:30 pm

Haywood Waterways: email: info@haywoodwaterways.org
or call: (828) 476-4667 EXT 10

Holidays and After Hours

Call: (828) 456-5363

NC Department of Environmental Quality Hotline

Call: 1-866-STOP-MUD

When calling, please be prepared to share the following information: time/date, location, and description of the issue

Please check the sections in the drop-down menu below to learn about our stormwater program.



Stormwater Hotline: 1-866-STOP-MUD

+ Development Services, Public Services, Haywood Waterways



PROPER WASTE DISPOSAL & STORMWATER ISSUES

- ▶ Recycling
 - ▶ Hard to dispose of items
- ▶ Pet waste pollution program



DON'T TANGLE OR CONTAMINATE
RECYCLE MORE
 FOR A GREENER STATE



PLASTIC

Bottles, tubs, jugs and jars



No pumps

Empty and rinse

METAL

All cans



Empty and rinse

GLASS

Bottles and jars



Empty and rinse

PAPER

Paper, cartons and cardboard



Flatten cardboard

KEEP THESE OUT!



- ⊗ Aerosol cans
- ⊗ Aluminum foil
- ⊗ All batteries (car, lithium, etc.)
- ⊗ Ceramic items
- ⊗ Clothing or textiles**
- ⊗ Diapers
- ⊗ Disposable cups (plastic and coffee)
- ⊗ Electronics**
- ⊗ Food-tainted items
- ⊗ Hazardous waste
- ⊗ Household glass
- ⊗ Medical waste
- ⊗ Plastic bags/wrap*
- ⊗ Scrap metal/wood**
- ⊗ Shredded paper**
- ⊗ Styrofoam/peanuts
- ⊗ Tangles (cords, hoses, wires, etc.)
- ⊗ Tires**
- ⊗ Toys



* Take clean and dry plastic bags and wrap back to the grocery store.

** These items may be able to be taken to a convenience center or other facility that will recycle them. Call your local recycling agency to find out how.

COMMON HOUSEHOLD ITEMS DIFFICULT TO DISPOSE OF.....

Convenience Centers & Materials Recovery Center – Jones Cove Rd.

- Automotive oil & cooking oil
- Household and automotive/boat/lawn mower batteries
- Antifreeze

Hazardous Household Waste Event

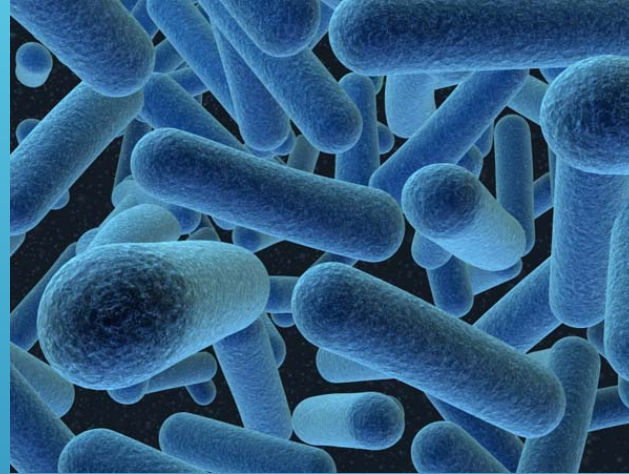
- Oil based paint
- Household chemicals
- Mixed solvents



For more information contact the Materials Recovery Center at (828) 627-8042



PET WASTE POLLUTION PROGRAM



Bag it!!
Flush it!! or
Toss it in the trash!!!
BUT DON'T compost it!!!



GENERAL STORMWATER INFORMATION

Stormdrains are not connected to the sewer line.

Whatever goes down a stormdrain will be carried and dumped, untreated, into the nearest waterway.



+



+



=



HELP KEEP POLLUTION OUT OF OUR WATERWAYS!!!!

- Maintain dumpsters
- Place trash in a secure receptacle
- Secure trash when hauling it
- Dispose of pet waste in the trash or flush it
- Properly dispose of all hazardous waste material
- AND NEVER DUMP ANYTHING DOWN A STORMDRAIN!!!

*Consider joining a stream cleanup or the Adopt – A – Stream Program



STREAM CLEANUPS & ADOPT – A – STREAM PROGRAM

Big Sweep 2022

- ▶ Three groups participated
- ▶ 43 volunteers removed 2,590lbs. of trash



To date stream cleanups and the Adopt – A – Stream program has removed 40 tons of trash from our waterways!!!

Adopt – A – Stream Program

Currently 6 groups are active in the town limits

Three new groups joined in 2022:

- Premier Magnesia, LLC (Giles Chemical)
- Canopy Realtor Association
- FUMC Afterschool



How Can You Help?

Start at Home

Volunteer

Membership

Tell a Friend

Donate

Explore

Questions or Concerns call Haywood Waterways: 828-476-4667



Clean water starts with you!