

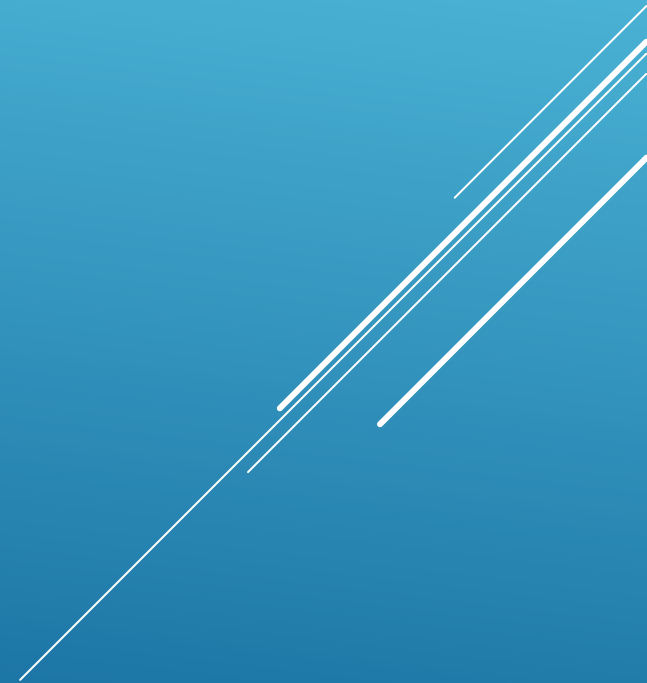
# EROSION & SEDIMENTATION

- ▶ Where does it come from?
  - ▶ Why we should care?
  - ▶ Solutions

Christine O'Brien, Program Manager



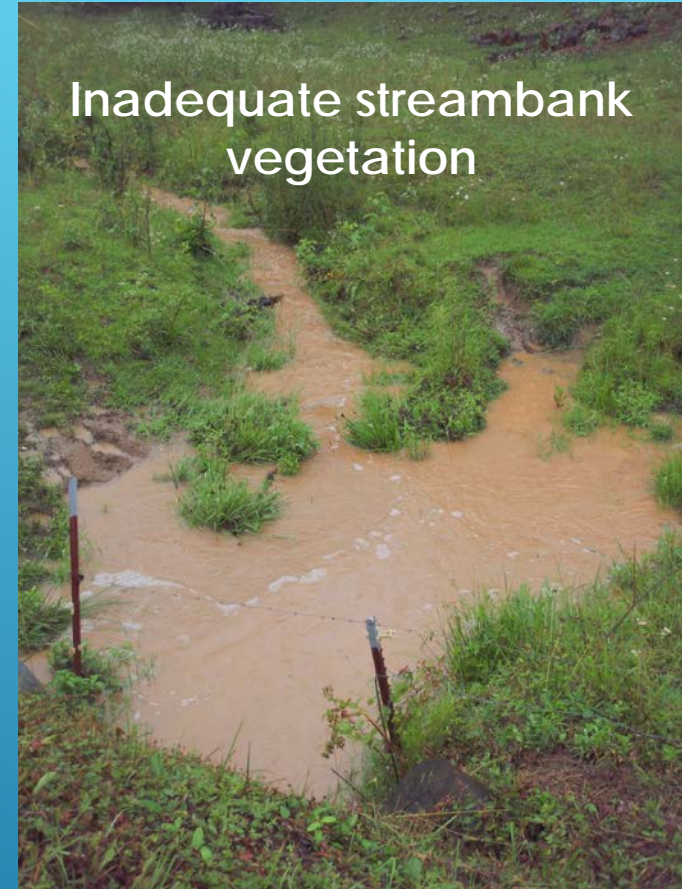
What is the #1 pollutant in  
Haywood County?????



**SEDIMENT!!**



# Where does it come from?





Insufficient cover crop



Building on steep terrain



Unpaved roads



# Why should we care?





## Tourism

2019 = \$204,260,000 / 1,900 jobs

2018 = \$189,940,000 / 1,840

2010 = \$116,310,000 / 1,300

2000 = \$ 99,960,000 / 1,590

1990 = \$ 55,130,000 / 1,260

*Source: NC Dept of Commerce/Tourism*



## Solutions:

1. Reduce building on steep slopes
2. Direct water off unpaved roads into vegetated areas
3. Avoid mowing within 10-25 feet of a waterway

And.....





# Plant! Plant! Plant!

Native plants are the best choice



## How Can You Help?

Start at Home

Volunteer

Membership

Tell a Friend

Donate

Explore

Questions or Concerns call Haywood Waterways: 828-476-4667



**Clean water starts with you!**

# LOCAL EXAMPLES OF EROSION & SEDIMENTATION MEASURES



Olga Grooman  
Development Services

# CONSTRUCTION ENTRANCE



# SILT FENCE- NOT STRONG ENOUGH



# SILT FENCE- NOT INSTALLED



# SILT FENCE- SEEPING THROUGH



# STRAW



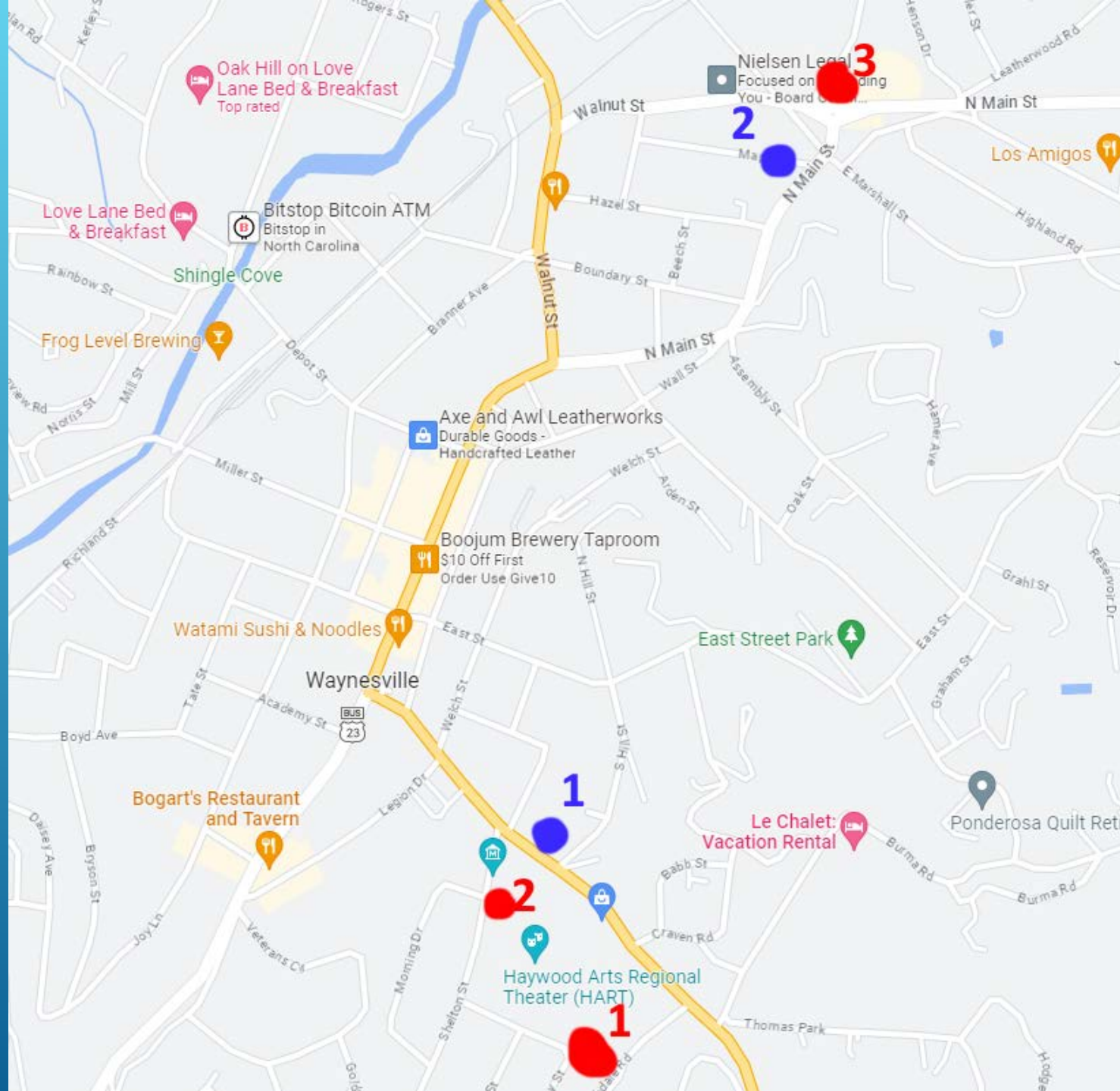


# FECAL MONITORING UPDATE



Shelton Branch:  
3 sewer issues  
2 waterline issues

Browning Branch:  
Investigation ongoing





THANKS!

