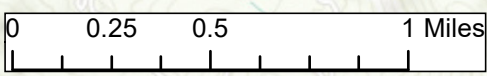
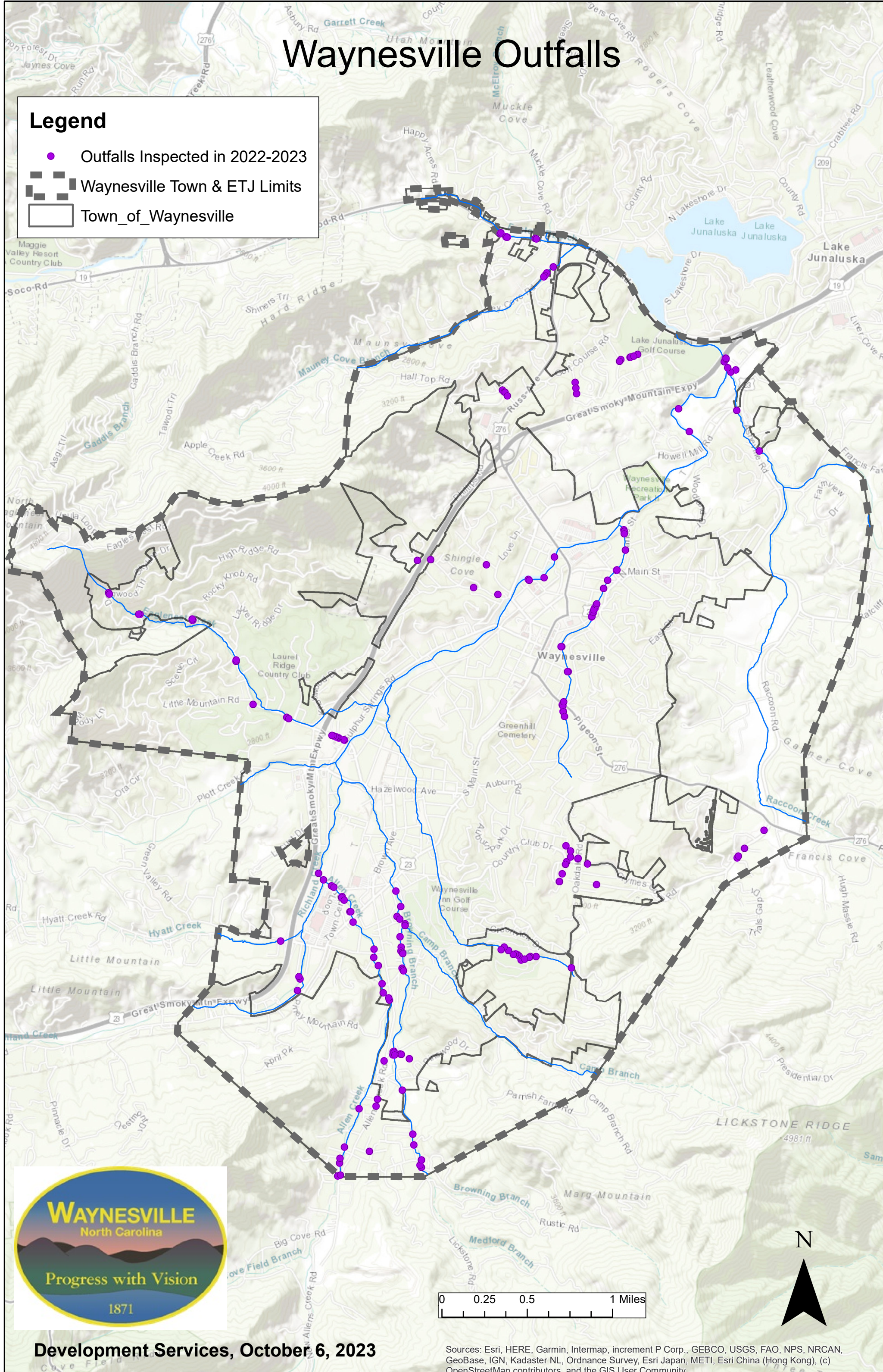


# Waynesville Outfalls

## Legend

- Outfalls Inspected in 2022-2023
- ▣ Waynesville Town & ETJ Limits
- ▭ Town\_of\_Waynesville



Development Services, October 6, 2023

Sources: Esri, HERE, Garmin, Intermap, increment P Corp., GEBCO, USGS, FAO, NPS, NRCAN, GeoBase, IGN, Kadaster NL, Ordnance Survey, Esri Japan, METI, Esri China (Hong Kong), (c) OpenStreetMap contributors, and the GIS User Community