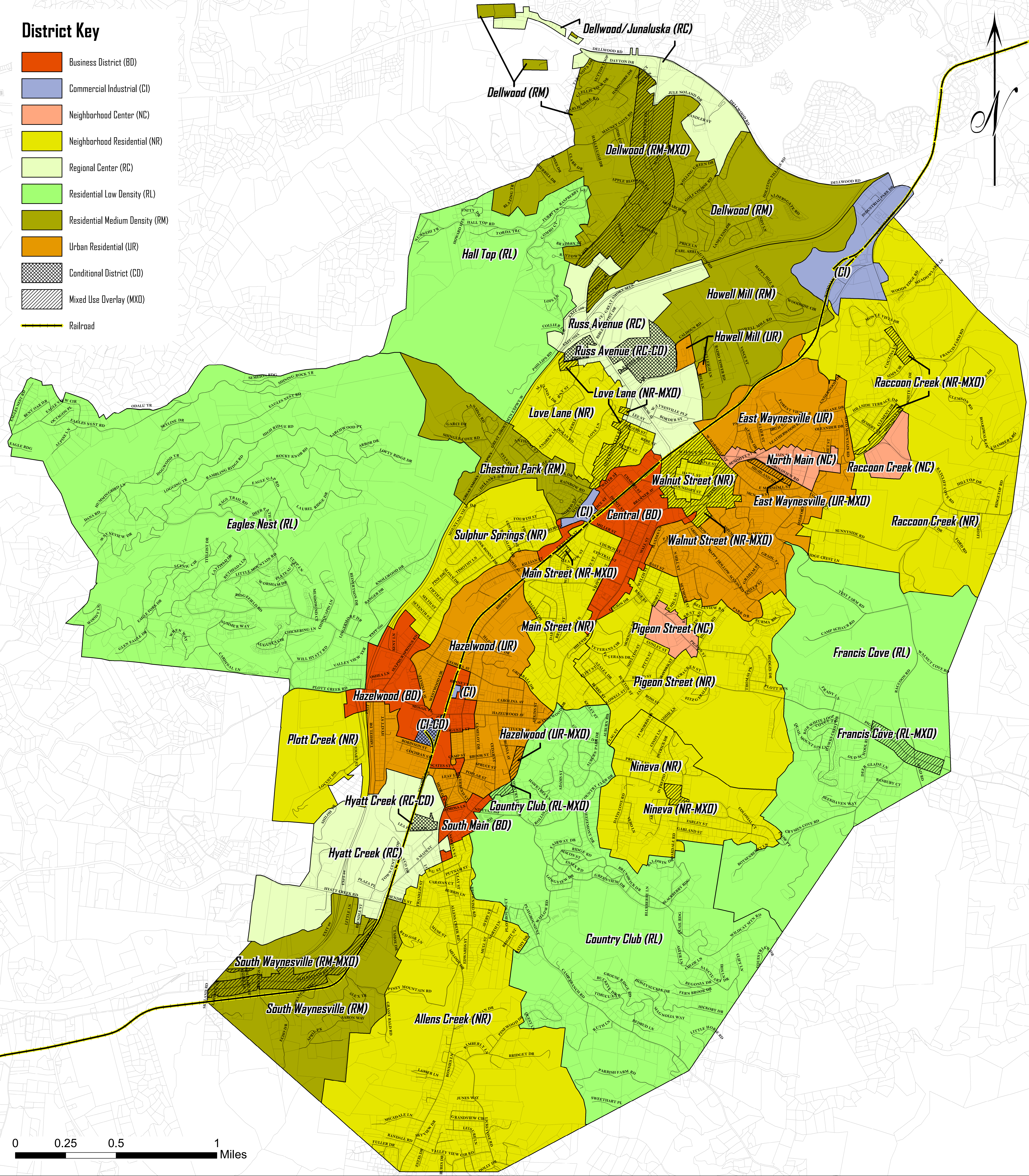
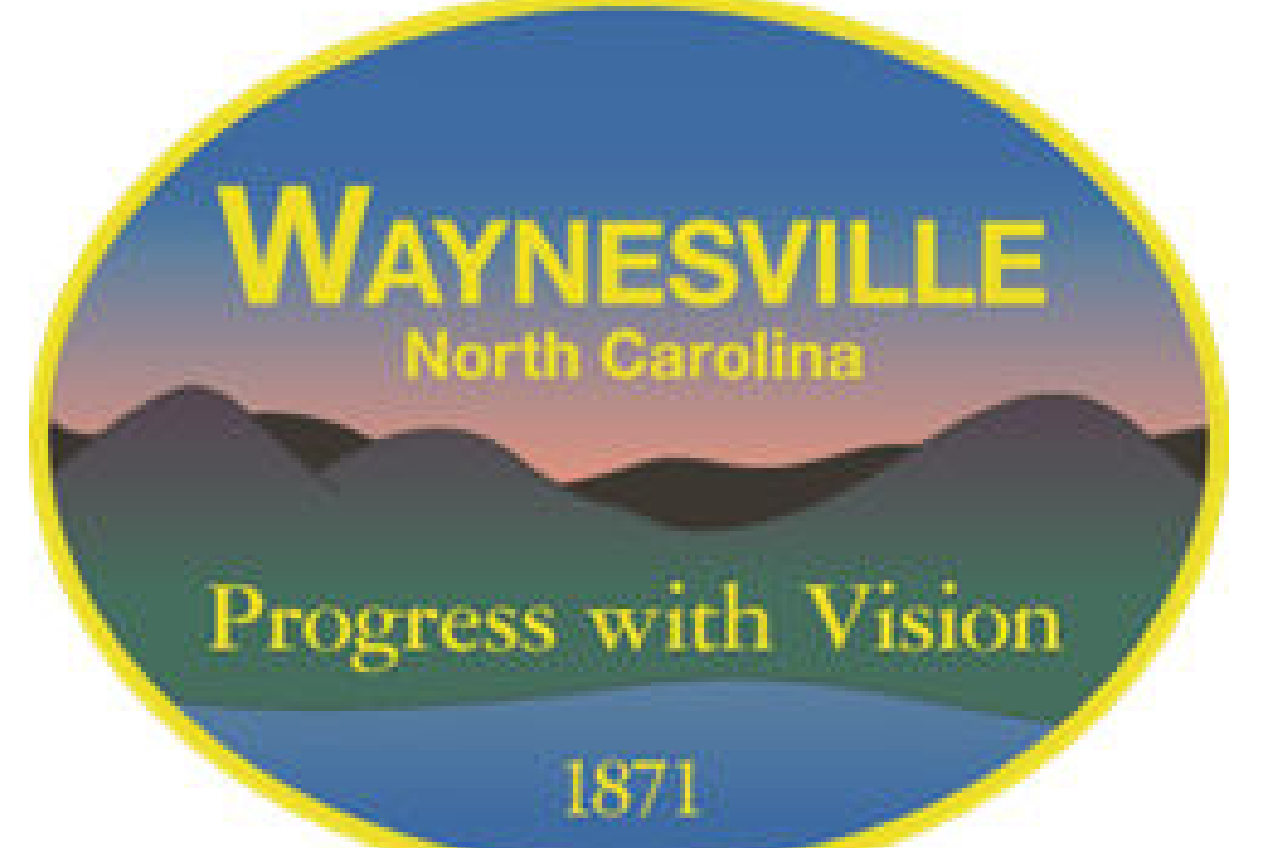


District Key

- Business District (BD)
- Commercial Industrial (CI)
- Neighborhood Center (NC)
- Neighborhood Residential (NR)
- Regional Center (RC)
- Residential Low Density (RL)
- Residential Medium Density (RM)
- Urban Residential (UR)
- Conditional District (CD)
- Mixed Use Overlay (MXD)
- Railroad



Official Land Development Map Town of Waynesville, North Carolina



In accordance with the Town of Waynesville Land Development Standards adopted April 12, 2011 (LDS Section 2.1)

Development Services, November 2020