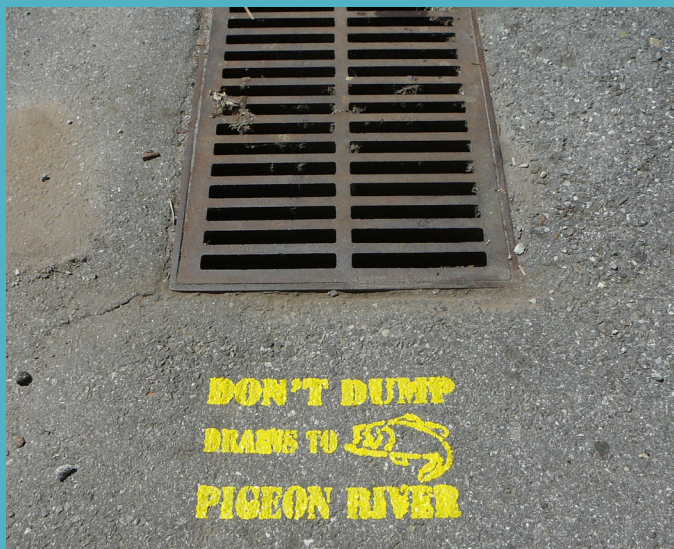




# Town of Waynesville Stormwater Program

## *Protecting the Richland Creek Watershed*

### Public Education and Outreach



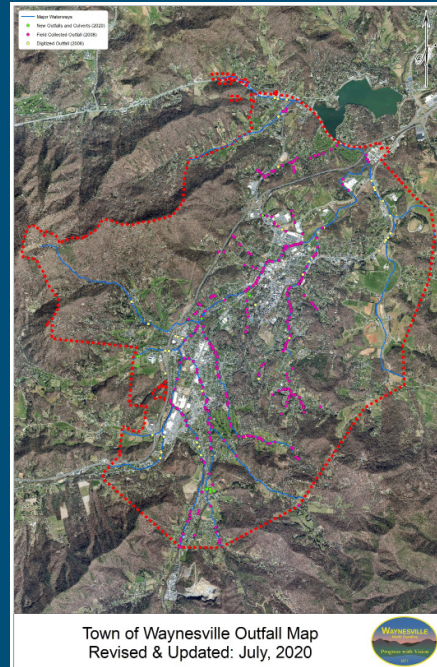
- Educate municipal employees, businesses and the public on the hazards associated with stormwater illicit discharges, illegal dumping, and improper disposal of waste.
- Maintain a stormwater website and 24 hour hotline to report incidents of pollution.

### Public Participation and Involvement



- Create and implement ongoing opportunities for the public to volunteer and provide input on stormwater issues.

### Illicit Discharge Detection and Elimination



- Plan, track, train, and report illicit discharges into the watershed.
- Update and enforce stormwater ordinances and regulatory mechanisms.
- Update and monitor outfalls and maintain Municipal Separate Storm Sewer Systems map.

### Construction Site Runoff Controls



- Enforce ordinances and other regulatory mechanisms.
- Review and uphold procedures for site plan review, site inspection, and enforcement.

### Post-Construction Runoff Controls



- Enforce and document management of stormwater development after construction is completed.

### Pollution Prevention/ Good Housekeeping



- Maintain and oversee comprehensive programs to prevent and minimize pollutants in stormwater runoff from municipal facilities and operations.

## FOR MORE INFORMATION, PLEASE VISIT:

[www.waynesvillenc.gov](http://www.waynesvillenc.gov) → Development Services → Stormwater Management

To report an illicit discharge, please call: during regular business hours: (828) 456-8647  
after hours and holidays: (828) 456-5363

An illicit (illegal) discharge is any discharge to a municipal storm sewer system – storm drains, pipes, and ditches – that is not composed entirely of stormwater.