



Best Management Practices (BMP's)

The main sources of pollution identified for the Town of Waynesville are sediment, household waste, thermal stress (heat), leaking automobile fluids, trash, and bacteria. Best Management Practices (BMP's) can be used by households and businesses. The more impervious surfaces that are present on a property, the more stormwater practices that are needed to offset the run-off. A combination of multiple green infrastructure and pollution mitigation techniques are most effective.

Green Infrastructure

Planting Trees- Trees are wonderful stormwater management infrastructure. They are the original stormwater infrastructure. They keep soil together, decrease erosion, and clean large amounts of rainwater.



Retention (wet) basins/ponds- Retention ponds are ponds that constantly contain water. They are at a relatively low elevation and have the capacity to increase in volume to decrease run-off and slow down stormwater infiltration.



Ingles Market 201 Barber Blvd

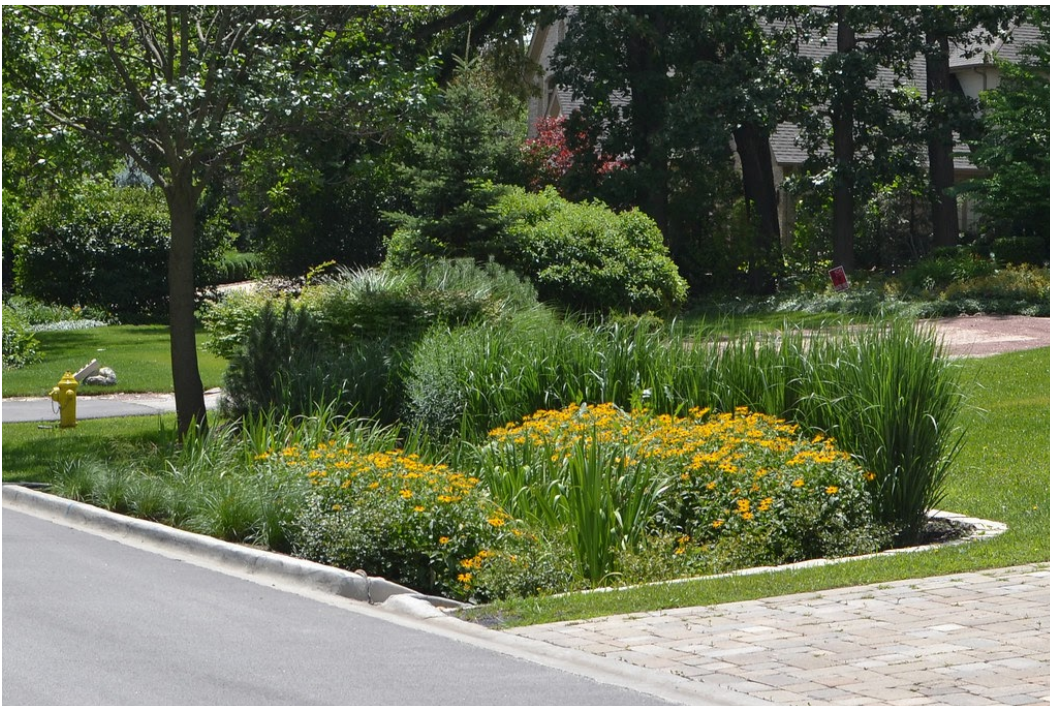
Detention (dry) basins/ponds- Detention ponds are depressions that fill with water during peak storms in order to decrease run-off and allow water to infiltrate into the ground slowly.



Porous pavement- Porous pavement decreases the impervious surface area and offers more land for infiltration.



Rain Garden- Rain gardens are depressed areas of a landscape, filled with plants that clean and slow stormwater, allowing larger volumes of water to be infiltrated down.

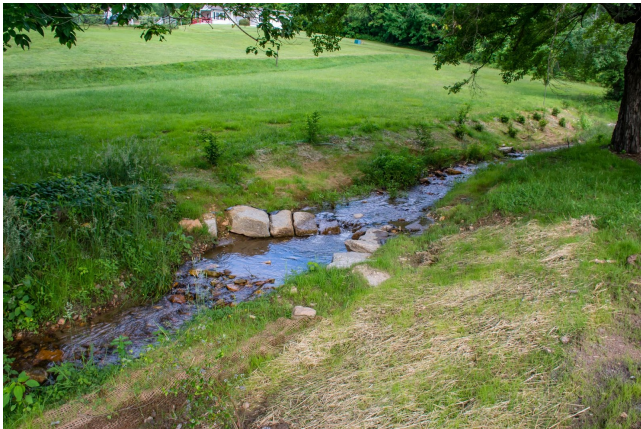


Rain Barrels- Rain barrels are barrels that catch the downspout from a roof in order to limit the run-off water and create water that can be later used for watering a garden, or engineered to be used as brown water in a home.



Streambank buffers- Streambank buffers set aside a certain distance from the stream that is left undeveloped in order to allow stormwater to have time to infiltrate before reaching the streams and therefore decreasing the streambank erosion and amount of pollution in the waterways.

Stream bank restoration- Streambanks that have already been eroded and damaged due to high volumes of stormwater runoff can be restored by adding native plant species and evening the bank slope.



Chestnut Park Before and After

Pollution Mitigation

Pick up trash and keep in closed bins

A lot of trash on the roads get swept up by stormwater and taken to waterways. Keeping trash in closed bins keeps storm drains clear and waterways beautiful.

Keep pet waste off the roads

There are a lot of bacteria in pet waste. When lots of pet waste is left in the roads, the accumulation can harm the health of the local creeks and streams.



To the right of Watami Sushi & Noodles

Wash your car on permeable surfaces

Chemicals that go down storm drains go straight into the local waterways without being cleaned. Washing your car on a lawn allows the chemicals to be cleaned by plants before heading to the streams, creeks, and rivers.