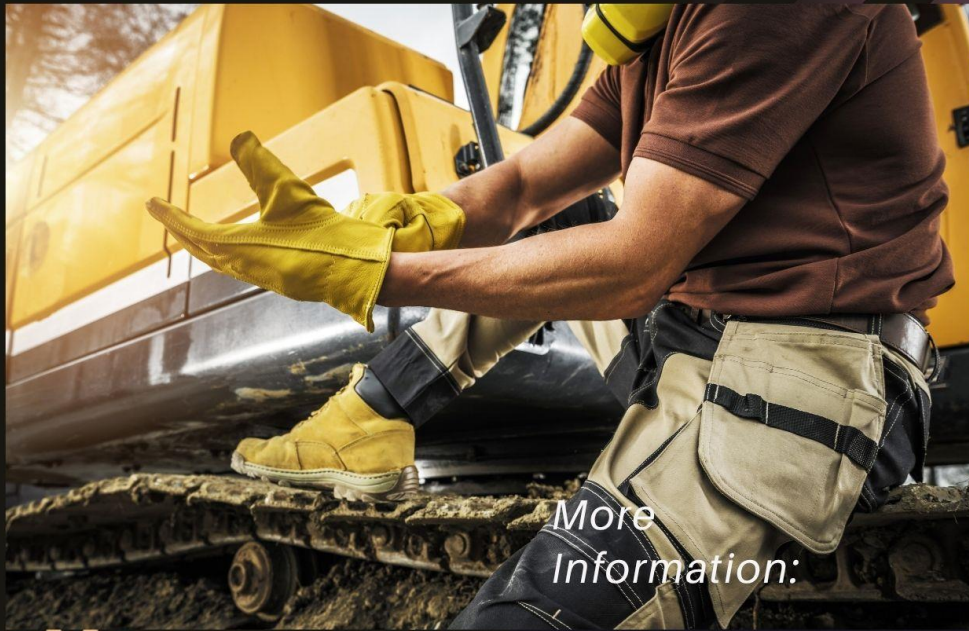


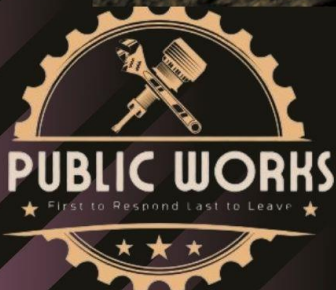
“The Public Services Department is committed to providing quality, cost-effective, customer-oriented municipal services that enhance the quality of life for the citizens of Waynesville.”

WAYNESVILLE PUBLIC SERVICES DEPARTMENT IS RECRUITING FOR

EQUIPMENT OPERATOR WATER/SEWER MAINTENANCE



*More
Information:*



Currently accepting
applications.
Location:
16 South Main Street
Waynesville, NC
28786

WWW.WAYNESVILLENC.GOV

Starting Salary:

\$40,081.59

**5% SALARY INCREASE AT
6 MONTHS OF SERVICE
MUST HOLD CDL TO QUALIFY**

APPLY IN PERSON OR ONLINE

WWW.WAYNESVILLENC.GOV/DEPARTMENTS/HUMAN-RESOURCES/CURRENT-VACANCIES

CALL WAYNE BOLIN FOR MORE INFORMATION: 828-456-3706 EXTENSION 2327



The Town of Waynesville, NC

JOB DESCRIPTION

To perform this job successfully, an individual must be able to perform the essential job functions satisfactorily. Reasonable accommodations may be made to enable individuals with disabilities to perform the primary job functions herein described. Since every duty associated with this position may not be described herein, employees may be required to perform duties not specifically spelled out in the job description, but which may be reasonably considered to be incidental in the performing of their duties just as though they were actually written out in this job description.

Equipment Operator – Water/Sewer Maintenance

Department: Public Services

Pay Grade: 60: \$40,081.59 - \$52,106.06

Hours: Monday – Friday 7:00 a.m. – 4:00 p.m.
Must be able to respond to on-call situations and emergencies as they arise after hours and weekends.

FLSA Status: Non-Exempt

GENERAL DESCRIPTION OF CLASS

The purpose of the class is to operate equipment for the Town's Water/Sewer Maintenance Division, to perform general maintenance work in support of other Public Works operations and projects, and to perform other work as assigned. This class works according to some procedures but decides how or when to do things; work is reviewed regularly by supervisor.

ESSENTIAL TASKS

The tasks listed below represent the majority of the time spent working in this class. Management may assign additional tasks related to the type of work of the class as necessary.

Manually loads / unloads materials onto vehicles as needed.

May 2025

Serves as crew leader, providing instruction and leadership of water maintenance workers as assigned.

Ensures crew members' compliance with all applicable policies, procedures, and standards of safety.

Performs maintenance work in support of other Public Works functions, including but not limited to installing utility pipe, assisting with road construction and repair, leveling grades, mowing grass, clearing right-of-ways, etc.

Operate trucks, trailers, etc.; operate a jack hammer and other power and hand tools as needed.

Inspects equipment to ensure proper and safe working condition; reports defects or required maintenance to the supervisor.

Performs routine maintenance and cleaning of assigned tools and equipment.

Performs all duties in accordance with applicable policies, procedures, laws, regulations, and standards of quality and safety.

Maintains accurate records of work performed.

PEOPLE INVOLVEMENT:

Requires speaking or signaling to people to convey or exchange information of a general nature.

INVOLVEMENT WITH THINGS:

Requires leading, operating or repairing complex machinery or equipment that requires extended training and experience, such as tractors, heavy mowers, trucks, etc. Involves operations of limited scope.

REASONING REQUIREMENTS:

Requires performing semi-routine work following procedures with occasional problems.

MENTAL REQUIREMENTS:

Requires doing clerical, manual, or technical tasks prescribed by standard practices, but which may require computation, the use of several procedures, and the use of independent judgments with obvious choices; requires normal attention for accurate results.

VOCATIONAL/EDUCATIONAL PREPARATION:

Requires high school diploma, GED equivalent or specialized vocational training.

SPECIAL CERTIFICATIONS AND LICENSES:

Must possess a valid North Carolina commercial driver's license with appropriate endorsements.

EXPERIENCE REQUIREMENTS:

Requires over three months and up to and including six months of experience in the operation of motorized vehicles and in the collection of trash and refuse.

PHYSICAL AND DEXTERITY REQUIREMENTS:

Requires heavy work that involves exerting between 50 and 75 pounds of force on a recurring basis and over 100 pounds of force on a frequent basis. Must be able to perform basic life operational functions of climbing, balancing, stooping, kneeling, crouching, crawling, reaching, standing, walking, pushing, pulling, lifting, fingering, grasping, feelings, and repetitive motion.

ENVIRONMENTAL HAZARDS:

The job may risk exposure to bright/dim light, dusts and pollen, extreme heat and/or cold, wet or humid conditions, extreme noise levels, vibration, fumes and/or noxious odors, traffic, moving machinery, electrical shock, toxic/caustic chemicals, disease / pathogens.

SENSORY REQUIREMENTS:

The job requires normal visual acuity and field of vision, hearing and speaking abilities, and depth perception.

JUDGMENTS AND DECISIONS:

Responsible for guiding others, requiring a few decisions affecting a few co-workers; works in a stable environment with clear and uncomplicated written/oral instructions but with some variations from the routine.

ADA COMPLIANCE

The Town of Waynesville is an Equal Opportunity Employer. ADA requires the Town to provide reasonable accommodations to qualified individuals with disabilities. Prospective and current employees are invited to discuss accommodations.

The Town of Waynesville has the right to revise this job description at any time. This description does not represent in any way a contract of employment.

May 2025

Interested applicants may submit an application to:

Town of Waynesville,

Brittany Angel, HR Coordinator

Human Resources Department

16 S. Main Street

Waynesville, NC 28786

Or via email to bangel@waynesvillenc.gov

Applications will be accepted until filled